

Opensource Based Enterprise Integration Solution



SkyFUSION

SkyTECH Solutions

SkyTECH is the flagship IT solutions and services arm of The Chatterjee Group (TCG) - a \$ 2 Billion conglomerate based out of New York. The interests of The Chatterjee Group (TCG) ranges across Knowledge based sectors covering Transportation & Logistics, Banking & Financial, Retail, real estate for knowledge parks and petrochemicals.

SkyTECH Solution was formed as a JV between TCG and United Airlines in 1999, focused on providing niche technology and domain based software and technology solutions to industries such as Airlines, Airport & Transportation and Consumer Goods Industry.

SkyTECH Solutions

Primary Business Address
953 Plum Grove Road
Suite D, Schaumburg
IL 60173

Phone: 1 847-995-8450

Fax: 1 847-995-8455

SkyFUSION Context?

Business Scenario

Your business is growing rapidly, business rules are changing and have disparate system to manage business?

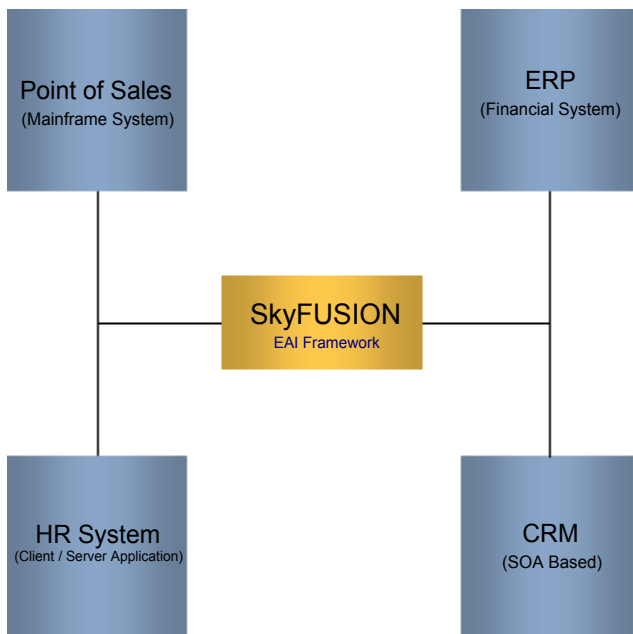
Your leaders want to better manage performance in every area and need integrated view of performance?

You need to optimize investments in existing systems and make choices that fit your business requirements?

You need cost effective middleware solution which can integrate disparate system?

Due to acquisition of new organization both the IT system you want to run in parallel but data integration issues?

Need to address the system integration issues quickly?



How SkyFUSION will Help?

SkyTECH has designed and developed a simple, lightweight and high performance Enterprise Application Integration framework called SkyFUSION to address above mentioned business scenario.

SkyFUSION is a Mule based middleware solution for Enterprise Data Integration. It has in-built rule engine which helps enterprise to adopt flexible rules during system integration. SkyFUSION helps the enterprise to integrate disparate system, starting from legacy mainframe based application to SOA based system. The framework provides the flexibility to configure the data integration process as per organization need to optimize the data integration overhead. Some of the features of SkyFUSION are as follows:

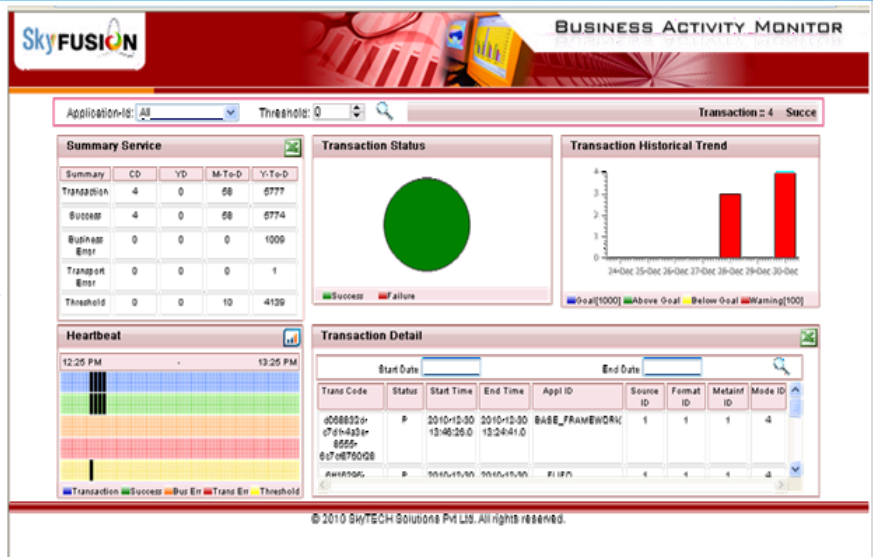
- Built on Open Source platform and SOA enabled Data Integration Framework
- It can accept or provide any form of data, starting from text file to XML
- It has built-in rule based Data Transformation Engine which helps to change the business rule for data transformation
- Business Rules can be managed by business users in MS excel file and can be ported to Rule Engine for data transformation
- It has features for data or Process Health Monitoring (Business Activity Monitoring) in the form of Administrator's Dashboard which includes data exception management, monitoring, configuration and monitoring message queue health
- It provides data auto healing feature based on the history data which helps to minimize data exceptions
- Built-in adapters of multiple type of data source helps to expedite the implementation
- Notification and escalation workflow helps the enterprise to take corrective actions quickly
- The framework can support both batch and online data integration and can be configured as per business need
- In-build data caching features help to address the performance and scalability

SkyFUSION Framework Details

Dashboard for Data Management:

The Administrator dashboard helps to monitor data exception management, online data transfer monitoring, monitoring Queue, managing data exception. The drill-down feature in the dashboard gives the flexibility to monitor the data integration in the elementary level and will show the history of transaction.

Data Auto Healing: This component of SkyFUSION helps to heal the data while dispatching to the target system. Data healing is being done based on the history of data correction made.



Notification & Workflow Engine: In-built notification and workflow engine for escalation is being used to monitor the data integration activities and manage data exceptions effectively.

Technology Used

Open source based / low cost technology has been used to optimize the cost of ownership.

Platform: Linux / Windows / Unix

Rule Engine: Drool

App Server: JBoss

Web Server: Tomcat, JBoss

Service Bus: MULE ESB or Apache Service Bus (Active MQ, Service Mix, Camel)

Database: MySQL

Client (Desktop): All Browsers

Why SkyFUSION?

- Low Cost of ownership
- Built-in Business Activity monitoring Dashboard
- Rule based data transformation
- Automated data healing capability
- Externalized business validation through Rule Engine implementation
- Business rules can be managed by business users, hence no dependency on the programmer
- On demand data transformation through configuration changes
- Ease in Implementation

Some of the Implementation of SkyFUSION

Airport Automation: SkyTECH is giving end-to-end airport automation IT solution to a Greenfield Airport in India. SkyFUSION is being used as messaging backbone to several Airport IT applications. It is taking data from Airport Traffic Control, Car Parking Management system and transmitting the data to Airport Operational Database (AODB). SkyFUSION is also responsible to pull the data from AODB and distributing the Airlines data to Flight Information Display (FIDS), Flight Information (FLIFO) Management and Airport Operational Dashboard.

Data Center Carbon Footprint: SkyTECH is building business intelligence dashboard solution to measure data center carbon footprint. To provide data center carbon footprint optimization technique, the product is supposed to pull data center information from CA Unicenter or HP openview like data center monitoring products. In this solution SKYFUSION is working as enterprise data integration framework to pull the data center device information from data center monitoring products, transforming the data as per business requirement. The Notification and workflow engine of SkyFUSION is being used to monitor the data exception.



MAKES IT FLY

BANKING | TRANSPORTATION & LOGISTICS | FMCG | AIRPORT

Thank You



USA

SkyTECH Solutions LLC
953 Plum Grove Rd.
Suite D.
Schaumburg, IL 60173
Tel: +1 847-995-8450 .
Fax: +1 847-995-8455.
sales.support@skytechsolutions.co.in

KOLKATA

SkyTECH Solutions
BIPPL Building C
Block EP & GP
Salt Lake Electronic Complex
Kolkata - 700 091
Tel: +91 33 23575441
Fax: +91 33 23575452
sales.support@skytechsolutions.co.in

MUMBAI

SkyTECH Solutions
Plot No 13 A Lower Ground Floor
Paper Box House
Mahakali Caves Road
Andheri (East)
Mumbai - 400 093
Tel: +91 22 66775252
Fax: +91 22 66923817
sales.support@skytechsolutions.co.in

CHENNAI

SkyTECH Solutions
Vukan Towers
4th & 5th Floor
81 Thirumalai Pillai Road.
(Off GN Chetty Road) . T Nagar .
Chennai - 600017
Tel: +91 44 43502201
Fax: +91 44 43502207
sales.support@skytechsolutions.co.in



MAKES IT FLY