

## MESSAGE ORIENTED MIDDLEWARE BUS

Airlines and Airports typically use different IT applications and third-party tools developed over several years and built on diverse technology platforms by multiple vendors. With increasing competition and the growing need to understand and respond to customer preferences, airlines and airports need to upgrade and integrate disparate systems to ensure seamless data flow. SkyTECH can integrate solutions provided by multiple vendors across numerous technology platforms - legacy, client server, middleware, open source, wireless.

SkyTECH has developed a multi-channel Message Oriented Middleware (MOM) data bus, which allows various systems, built on different technology platforms, to communicate with one another in an international airport in China. SkyTECH designed an application-independent, real time cross-platform communication protocol that allows communication between multiple airport systems.

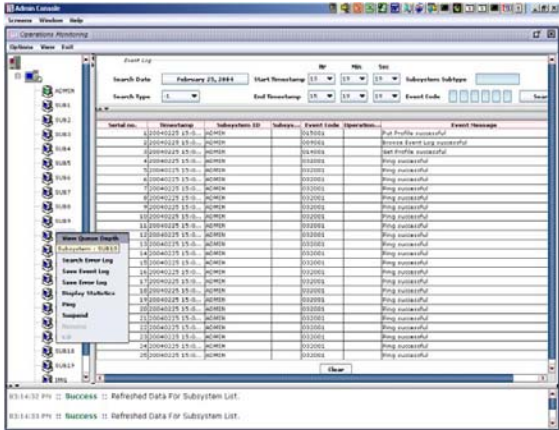
### OUR SOLUTION – FEATURES

- Seamless integration between different application subsystems (and any other system developed later) by placing a middleware backbone layer over a multi-channel Message Oriented Middleware (MOM) data bus along with a standard application interface
- Interfaces provide an application independent cross-platform communication protocol for all type of applications
- For easy adaptability of any new subsystems, the multi-role communication channel is fully parameterized and configured in run time
- Run-time routing of the application-requests to the correct destination is controlled by run-time request broker services, placed between the APIs and the base MOM implementation

**AIRLINE CONSULTING SERVICES – MESSAGE ORIENTED MIDDLEWARE BUS**

**BENEFITS**

- Passengers receive accurate and reliable flight information on a real-time basis
- Airports improve the on-time departure of flights
- Flexibility in terms of connecting a new system to the Middleware Bus and the various subsystems in different languages (C, C++, Java) and in any platform (Windows NT, UNIX, LINUX)
- Scalability, as the number of subsystems integrated to the Middleware Bus and the number of users of a particular subsystem can be changed as per the requirements



Operation Monitoring

**ABOUT SKYTECH**

SkyTECH Solutions provides IT consultancy services and develops niche software solutions for global airlines and airports. Incorporated as a joint venture between United Airlines, one of the largest airlines and The Chatterjee Group (TCG), a US-based investment firm, SkyTECH is an established player in the airline/airport IT domain.

Based in Chicago, SkyTECH has 3 Offshore Development Centers (ODCs) in India at Kolkata, Mumbai and Chennai. SkyTECH's offshore development infrastructure is certified to ISO 9001:2000 and SEI CMM Level 5.

SkyTECH's diverse client base is geographically spread in the USA and Asia-Pacific, and includes some of the largest airlines, airports and IT consulting firms of the world.